

1100 Watts Single Output AC-DC Enclosed Type Medical Power

FEATURES

- Standard PS Off and DC OK signals
- Operation altitude up to 5000 meters
- Inhibit - TTL low to disable output
- Designed for Home Health Care application
- Less than 300uA leakage current & BF Class insulation
- EN55011 Class B conducted emissions
- Standard PS Off and DC OK signals
- Variable speed internal fan

SPECIFICATIONS

Input Voltage	90-264 VAC
Input Frequency	47-63Hz
Input Current	16A max.
Inrush Current	50A/115VAC or 100A/230VAC cold start
Earth leakage / Touch Current	300uA/100uA max. at 264 VAC/63Hz
Line regulation	0.5% max. at full load
Remote Sense	Compensation for cable losses up to 0.5V
Withstand voltage	5656VDC from input to output
Hold Up Time	10ms min. at 110VAC
Operating Temperature	-10 to +70°C
	Derating from 100% at +50°C linearly to 50% at +70°C
Storage Temperature / Humidity	-40 to +85°C / 5% to 95%
Fan Power	12V at 1.0A max.
Safety Standard	UL ES 60601-1/CSA-C22.2 No. 60601-1, CE
EMC Standard	EN55011 class B
	EN61000-3-2,3, EN61000-4-2,3,4,5,6,8,11

All specifications are typical at nominal line, full load and 25°C; unless otherwise noted.

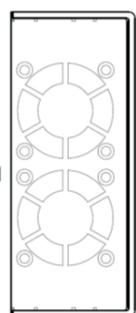
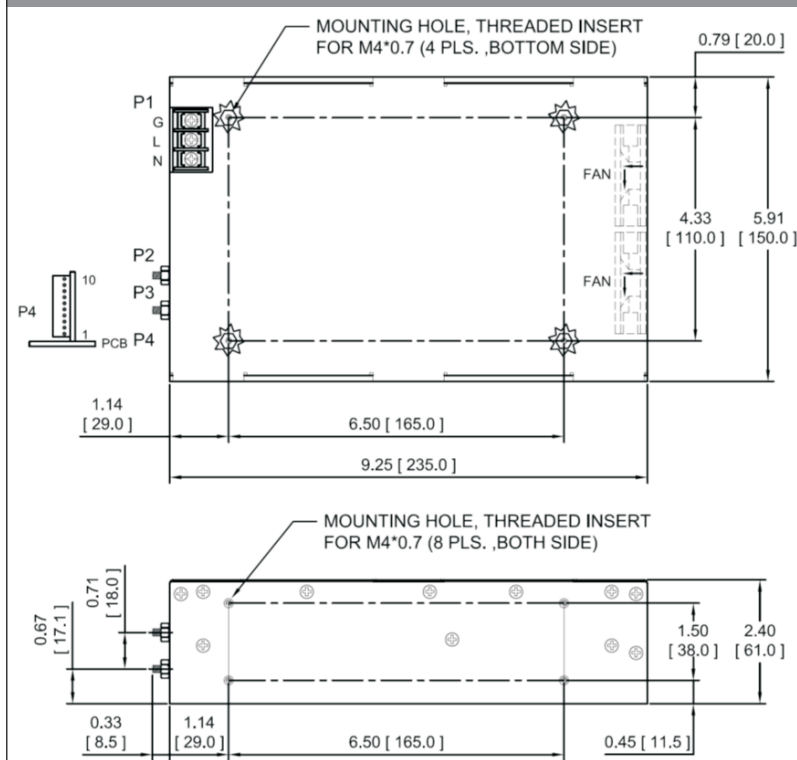


Model Number	Output Voltage	Output Current		Output Max. Watts	EFF. 115V/230V
		Max.	Peak		
FPM1100-S240-E	24VDC	45.84A	52.10A	1100W/1250W	88/92%
FPM1100-S280-E	28VDC	39.29A	44.65A	1100W/1250W	88/92%
FPM1100-S320-E	32VDC	34.38A	39.07A	1100W/1250W	90/93%
FPM1100-S340-E	34VDC	32.35A	36.77A	1100W/1250W	89/93%
FPM1100-S360-E	36VDC	30.56A	34.73A	1100W/1250W	90/93%
FPM1100-S420-E	42VDC	26.20A	29.77A	1100W/1250W	89/92%
FPM1100-S480-E	48VDC	22.92A	26.10A	1100W/1250W	89/92%

Notes:

1. Peak current and power possible at 170-260 VAC input, 10 seconds, 35% duty cycle
2. Ripple and noise is maximum peak-to-peak voltage value measured at output within 20 Mhz bandwidth, at rated line voltage and output load ranges, and with a 10 μ F tantalum capacitor in parallel with a 0.1 μ F ceramic capacitor across the output.

MECHANICAL DRAWING (Unit: mm)



NOTES:

1. Dimensions shown in inches [mm] ; Tolerance 0.02 [0.5] maximum
2. Input connector P1 is Dinkle terminal P/N DT-35C-B01W-02, with nickel plated M3 screws.
3. Output connectors P2 and P3 are for M4x0.7 screw connections.
4. Output connector P4 is Molex header 87833-08 or equivalent, mating with Molex housing 51110-0850 or equivalent.
5. Fan connector P5 is JST header B2B-ZR-3.4 or equivalent, mating with JST housing ZHR-2 or equivalent.
6. To ensure compliance with level B emissions, connect the four "*" marked mounting holes with metallic standoffs to chassis.
7. Weight: 1.0 Kg (2.23 lbs.) approx. for U-bracket form, 1.14 Kgs. (2.52 lbs.) approx. for enclosed form
8. Maximum penetration of fixing screws is 4 mm from the outer surface of chassis

PIN CHART

Connector	P1 (AC)			P2		P3	
PIN NO.	1	2	3	1	2	1	2
Polarity	Live	Neutral	Ground	+V1		V1 Return	

Connector	P4									
PIN NO.	1	2	3	4	5	6	7	8	9	10
Polarity	FAN Return	+12V FAN	PS OFF	DC OK	+5V Standby	Inhibit	PFD	-V1 Sense	+V1 Sense	common Return